

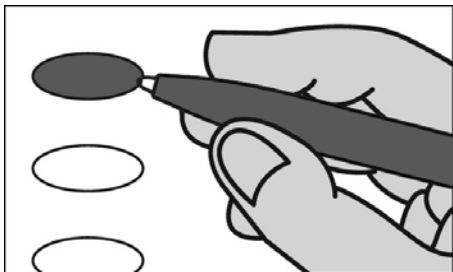
Official Primary Ballot

Partisan Office
August 11, 2026

S9

Notice to Voters: If you are voting on Election Day, your ballot must be initialed by two (2) election inspectors. If you are voting absentee, your ballot must be initialed by the municipal clerk or deputy clerk. Your ballot may not be counted without initials (see end of ballot for initials).

General Instructions



If you make a mistake on your ballot or have a question, ask an election inspector for help (absentee voters: contact your municipal clerk).

To vote for a name on the ballot, fill in the oval next to the name like this: ●

To vote for a name that is not on the ballot, write the name on the line marked "write-in" and fill in the oval next to the name like this: ●

Special Instructions for Voting in a Partisan Primary

In the Partisan Primary:

• You may vote in only ONE party's primary.

• If you choose a party, votes cast in that party will be counted. Votes cast in any other party will not be counted.

• If you do not choose a party, and you vote in more than one party, no votes will be counted.

You must vote for individual candidates.

Party Preference Section

Choose a party in which to vote

Fill in the oval next to your party choice, like this: ● Choose only ONE

- Republican
- Democratic
- Constitution
- Libertarian
- Wisconsin Green

Republican Party Primary

If you vote in this party's primary, you may not vote in any other party's primary.

Statewide

**Governor
Vote for 1**

- Tom Tiffany
- Andy Manske
- write-in:

**Lieutenant Governor
Vote for 1**

- David Varnam
- Will Martin
- write-in:

**Attorney General
Vote for 1**

- Eric Toney
- write-in:

**Secretary of State
Vote for 1**

- Jay Schroeder
- Brayden Myer
- Nate Pollnow
- Cindy Werner
- write-in:

**State Treasurer
Vote for 1**

- John S. Leiber
- write-in:

Congressional

**Representative in Congress
District 2
Vote for 1**

- write-in:

Legislative

**State Senator
District 15
Vote for 1**

- Scott Fleming
- write-in:

**Representative to the Assembly
District 43
Vote for 1**

- Paul McGraw
- write-in:

County

**Sheriff
Vote for 1**

- write-in:

**Clerk of Circuit Court
Vote for 1**

- write-in:

**End Republican Party
Primary**

Democratic Party Primary

If you vote in this party's primary, you may not vote in any other party's primary.

Statewide

**Governor
Vote for 1**

- David Crowley
- Sara Rodriguez
- Joel Brennan

**Lieutenant Governor
Vote for 1**

- Francesca Hong
- Kelda Roys
- Missy Hughes
- Mandela Barnes
- write-in:

**Lieutenant Governor
Vote for 1**

- Sarah Godlewski
- write-in:

**Attorney General
Vote for 1**

- Josh Kaul
- write-in:

**Secretary of State
Vote for 1**

- JoCasta Zamarripa
- write-in:

**State Treasurer
Vote for 1**

- Yee Leng Xiong
- Dylan Ray Helmenstine
- write-in:

Congressional

**Representative in Congress
District 2
Vote for 1**

- Douglas Alexander
- Mark Pocan
- write-in:

Legislative

**State Senator
District 15
Vote for 1**

- Mark Spreitzer
- write-in:

**Representative to the Assembly
District 43
Vote for 1**

- Brienne Brown
- write-in:

County

**Sheriff
Vote for 1**

- Curtis Fell
- write-in:

**Clerk of Circuit Court
Vote for 1**

- Amanda Nelson
- write-in:

**End Democratic Party
Primary**

Republican Party Primary begins at top of next column.

Democratic Party Primary begins at top of next column.

Constitution Party Primary begins on back of ballot.

Constitution Party Primary	
<i>If you vote in this party's primary, you may not vote in any other party's primary.</i>	
Statewide	
Governor Vote for 1	
<input type="radio"/> write-in:	
Lieutenant Governor Vote for 1	
<input type="radio"/> write-in:	
Attorney General Vote for 1	
<input type="radio"/> write-in:	
Secretary of State Vote for 1	
<input type="radio"/> write-in:	
State Treasurer Vote for 1	
<input type="radio"/> write-in:	
Congressional	
Representative in Congress District 2 Vote for 1	
<input type="radio"/> write-in:	
Legislative	
State Senator District 15 Vote for 1	
<input type="radio"/> write-in:	
Representative to the Assembly District 43 Vote for 1	
<input type="radio"/> write-in:	
County	
Sheriff Vote for 1	
<input type="radio"/> write-in:	
Clerk of Circuit Court Vote for 1	
<input type="radio"/> write-in:	
 End Constitution Party Primary	
Libertarian Party Primary begins at top of next column.	

Libertarian Party Primary	
<i>If you vote in this party's primary, you may not vote in any other party's primary.</i>	
Statewide	
Governor Vote for 1	
<input type="radio"/> write-in:	
Lieutenant Governor Vote for 1	
<input type="radio"/> write-in:	
Attorney General Vote for 1	
<input type="radio"/> write-in:	
Secretary of State Vote for 1	
<input type="radio"/> write-in:	
State Treasurer Vote for 1	
<input type="radio"/> write-in:	
Congressional	
Representative in Congress District 2 Vote for 1	
<input type="radio"/> write-in:	
Legislative	
State Senator District 15 Vote for 1	
<input type="radio"/> write-in:	
Representative to the Assembly District 43 Vote for 1	
<input type="radio"/> write-in:	
County	
Sheriff Vote for 1	
<input type="radio"/> write-in:	
Clerk of Circuit Court Vote for 1	
<input type="radio"/> write-in:	
 End Libertarian Party Primary	
Wisconsin Green Party Primary begins at top of next column.	

Wisconsin Green Party Primary	
<i>If you vote in this party's primary, you may not vote in any other party's primary.</i>	
Statewide	
Governor Vote for 1	
<input type="radio"/> write-in:	
Lieutenant Governor Vote for 1	
<input type="radio"/> write-in:	
Attorney General Vote for 1	
<input type="radio"/> write-in:	
Secretary of State Vote for 1	
<input type="radio"/> Pete Karas	
<input type="radio"/> write-in:	
State Treasurer Vote for 1	
<input type="radio"/> write-in:	
Congressional	
Representative in Congress District 2 Vote for 1	
<input type="radio"/> write-in:	
Legislative	
State Senator District 15 Vote for 1	
<input type="radio"/> write-in:	
Representative to the Assembly District 43 Vote for 1	
<input type="radio"/> write-in:	
County	
Sheriff Vote for 1	
<input type="radio"/> write-in:	
Clerk of Circuit Court Vote for 1	
<input type="radio"/> write-in:	
 End Wisconsin Green Party Primary	

Official Primary Ballot
Partisan Office
August 11, 2026
for

Town of
Fulton

Ballot issued by

Initials of election inspectors

Absentee ballot issued by

Initials of Municipal Clerk or Deputy Clerk

Certification of Voter Assistance
I certify that I marked or read aloud this ballot at the request and direction of a voter who is authorized under Wis. Stat. §6.82 to receive assistance.

Signature of assistor

For Official Use Only

Inspectors: Identify ballots required to be remade:

Overvoted

Damaged

Other

If this is the **Original Ballot**, write the serial number here: _____

If this is the **Duplicate Ballot**, write the serial number here: _____

Initials of inspectors who remade ballot